




# FAIRMACS



# Own Offices



 **F.M.L. own offices:** Singapore (1) – India (19) – Malaysia (1) – USA (2) – Dubai (1) – Australia (1) – Sri Lanka (1) – Bangladesh (1)

**In all other countries, we are using numerous trusted and carefully selected agents.**



## Global Services

Global Break Bulk / Project Movement

Global Container Trading

Global SOC Handling Specialist

Global Ship Chartering

Global Door to Door Services

Global Cross Trade Shipments

Global Cargo Tracking

Global LCL Shipments

Global Airfreight

Global Inland Haulage (General Trucking /  
Project cargo trucking (OOG))

Equipment owner: 45ft / FR s/ OTs / ISO  
Tanks / Reefer → 20ft & 40ft

Monitoring closely loading / unloading of  
project cargoes regardless where



Cross border trucking –  
Bonded / Non Bonded

Barging Services ex Singapore to  
Indonesia / Malaysia minor ports

Warehousing (Bonded / Non Bonded)  
Singapore (MES) & Malaysia

Crane Services (heavy lift / general lifting)

Stuffing / Unstuffing / Lashing ...

Consultation in loading / unloading of  
Project Cargo

Road & Cargo Survey

Handling of DG Class 1 Cargoes

Warehouse shifting

Stevedoring / Berthing of vessels

Creating Loading Plans

Duty Free Goods Trading

# Container types / sizes



**20GP**

| Inner Dimensions |       |       | External Dimensions |       |       |
|------------------|-------|-------|---------------------|-------|-------|
| L (m)            | W (m) | H (m) | L (m)               | W (m) | H (m) |
| 5.80             | 2.25  | 2.30  | 6.06                | 2.438 | 2.59  |



**20FR**

| Inner Dimensions |       |       | External Dimensions |       |       |
|------------------|-------|-------|---------------------|-------|-------|
| L (m)            | W (m) | H (m) | L (m)               | W (m) | H (m) |
| 5.65             | 2.438 | 1.95  | 6.06                | 2.438 | 2.00  |



**20OT**

| Inner Dimensions |       |       | External Dimensions |       |       |
|------------------|-------|-------|---------------------|-------|-------|
| L (m)            | W (m) | H (m) | L (m)               | W (m) | H (m) |
| 5.70             | 2.22  | 2.25  | 6.06                | 2.438 | 2.30  |



**40GP**

| Inner Dimensions |       |       | External Dimensions |       |       |
|------------------|-------|-------|---------------------|-------|-------|
| L (m)            | W (m) | H (m) | L (m)               | W (m) | H (m) |
| 11.76            | 2.25  | 2.30  | 12.19               | 2.438 | 2.59  |

Important: Inner dimensions may vary from carrier to carrier, the above is just a guideline!

# Container types / sizes



## 40HC

| Inner Dimensions |       |       | External Dimensions |       |       |
|------------------|-------|-------|---------------------|-------|-------|
| L (m)            | W (m) | H (m) | L (m)               | W (m) | H (m) |
| 11.70            | 2.25  | 2.45  | 12.19               | 2.438 | 2.90  |



## 40OT

| Inner Dimensions |       |       | External Dimensions |       |       |
|------------------|-------|-------|---------------------|-------|-------|
| L (m)            | W (m) | H (m) | L (m)               | W (m) | H (m) |
| 11.70            | 2.22  | 2.25  | 12.19               | 2.438 | 2.30  |

40OT HQ Inner = 2.55 H (m) / External = 2.60 H (m)



## 45HC

| Inner Dimensions |       |       | External Dimensions |       |       |
|------------------|-------|-------|---------------------|-------|-------|
| L (m)            | W (m) | H (m) | L (m)               | W (m) | H (m) |
| 13.25            | 2.25  | 2.45  | 13.71               | 2.438 | 2.90  |



## 40FR

| Inner Dimensions |       |       | External Dimensions |       |       |
|------------------|-------|-------|---------------------|-------|-------|
| L (m)            | W (m) | H (m) | L (m)               | W (m) | H (m) |
| 11.70            | 2.438 | 1.95  | 12.19               | 2.438 | 2.00  |

40FR HQ Inner = 2.20H (m) / External = 2.25 H (m)

Important: Inner dimensions may vary from carrier to carrier, the above is just a guideline!

# Past and Present Cargoes



## Handled Cargoes (OOG & WIG)

Marine Cranes / Tower Cranes / Mobile Cranes

Pipes / Steel Plates / Steel Frames

Generators / Power packs / Vessel Tanks

Excavators / Crawler Cranes / Bulldozers / Commettos

Oil and Gas Equipment

Speed Boats / Yachts / and other vessels

Automobiles

Construction Equipments

Fuselage + 2 x Wings + Spare Parts (Boeing 737)

Windmills

Tunnel Boring Machine Spare Parts

Cable Drums

Personnel Effects

Scrap Metals / Fertilizer in Jumbo Bags /.....



# Past Projects



Flow Metering Systems



Cable Drums



Pipes

Indian Customs Boats



Cooler Systems



Diesel Powered Gensets





# Past Projects



Tunnel Boring Machines



Excavators



Crane Knuckles

Silos



Compressors



Goldhofer SPMTs



# Past Projects



Rig Tanks



Boats



Yachts

Compressors



Kalmar



Winches



# Past Projects



Crane Knuckles



Trailers



Military Tanks

Trammels



Reels



Sleeves



# Past Projects



Pallet Stackers



Air Cures



Oil Well Equipments

Pipes



Indian Customs Boat



Tail Gas Drums



# STUFFING OF 45'HC CONTAINERS



# Project Technip – Analyzer Shelter– Petrochemical Plant



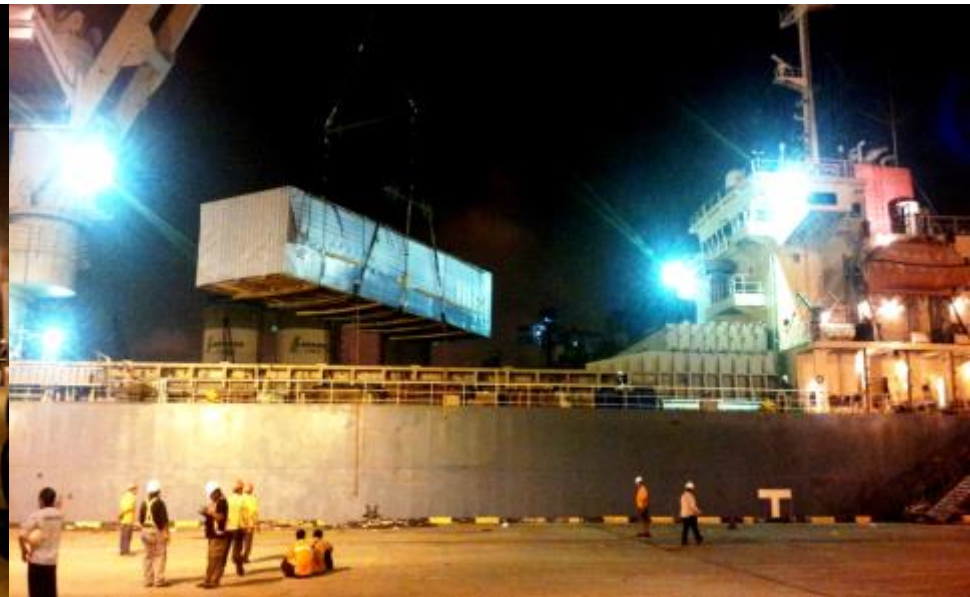
Origin: Singapore Jurong

Destination: Dammam Port

## Cargo Details

Approx. 916 FRT TON incl. 4 out of gauge with Accessories

Each 1654 x 532 x 357 cm – 32 MT



# Tail Gas Drum



Origin: Johor Bahru, Malaysia  
Destination: Batam, Indonesia  
Transport Mode: Road & Barge

## Cargo Details

Commodity: Tail Gas Drum

Quantity: 1

## Measurement / Weight

Length: 22.00 Meters

Width: 3.75 Meters

Height: 3.75 Meters

Weight: 22.00 Tons



# Tail Gas Drum





# Cable Reels



Origin: Kolkata, India

Destination: Fourchon Louisiana, USA

Via Transshipment: Jurong Port, Singapore

Transport Mode: Sea

Vessel Type: MPP

## Cargo Details

Commodity: Cable Reels

Quantity: 16

## Measurement / Weight per Piece

Length: 3.40 Meters

Width: 3.80 Meters

Height: 3.40 Meters

Weight: 64.00 Tons



# Cable Reels



# Fuselage



Origin: KLIA, Malaysia

Destination: Sentosa, Singapore

Transport Mode: Road

Trailer Type: Vessel Bridge (special trailer)

## Cargo Details

Commodity: Fuselage + Wings + Spare Parts

Quantity: 1

## Measurement / Weight

Length: 26.10 Meters

Width: 4.00 Meters

Height: 4.01 Meters

Weight: 30.00 Tons



# Fuselage



Origin: Singapore

Destination: Laem Chabang, Thailand

Transport Mode: Ocean Freight (2 x 40FR OOG)

Term: CIF Singapore

## Cargo Details

Commodity: Kalmar + Boom

Quantity: 1

## Measurement / Weight

Length: 6.90 Meters

Width: 4.60 Meters

Height: 4.00 Meters

Weight: 25.00 Tons



# Kalmar + Boom



# Tunnel Boring Machine



Origin: Singapore

Destination: Chennai

Transport Mode: Road / Conventional Vessel

Term: CIF Singapore

## Cargo Details

Commodity: Tunnel Boring Machine

Quantity: 21 Packages

- 6 x Containers
- 11 x Bulk
- 4 x Heavy Lift Packages



# Tunnel Boring Machine





# Tunnel Boring Machine



# Crew Boat



Origin: Singapore

Destination: Nhava sheva

Transport Mode: Road / Conventional Vessel

## Cargo Details

Commodity: Crew Boat

Quantity: 1 X BKK & 1X 40'FR



# Crew Boat



# Excavators

Origin : Kota Kinabalu

Destination : Chittagong

Transport Mode : Road/ conventional Vessel

## Cargo Details

Commodity : Doosan Daewoo Excavators,  
Pandoon sets , Komatsu Dozers with  
Dismantles

Quantity : 43 Packages

685.4Tons

M3 : 2859.21



# Excavators



# Flash Butt Trata Vehicle



# Analyzer Shelters & Chillers



Origin : Port of Tanjung Pelepas, Malaysia

Destination : Jeddah, Saudi Arabia

Transport Mode : Exworks / Conventional Vessel

## Cargo Details

Commodity : Analyzer Shelter / Chillers

Quantity : 3 x BBK + 1X40'FR + 1x20'FR

Weight : 31 Tons

Length : 16.75 meters

Width : 5.16 meters

Height : 4.05 meters



# Analyzer Shelters & Chillers





# Machine with Accessories



Origin : Singapore

Destination : Qingdao

Transport Mode : Ocean Freight

## Cargo Details

Commodity : Mori Seiko NT6600 DCG,  
Machine with Accessories

Quantity : 1xBKK + 1x40'OT +  
1x20'FR + 1x40'HQ

Weight : 75Tons

Length : 13.3meters

Width : 4.35meters

Height : 4.54meters



# Machine with Accessories



# Nag Separation System



Origin : Portklang

Destination : Haldia

Transport Mode : Ocean Freight

## Cargo Details

Commodity : Nag Separation System

Total Rt : 2700 Cbm

Total Tonnage : 375 Tons

Highest Weight : 44.50 Tons

Quantity : 17 Pcs

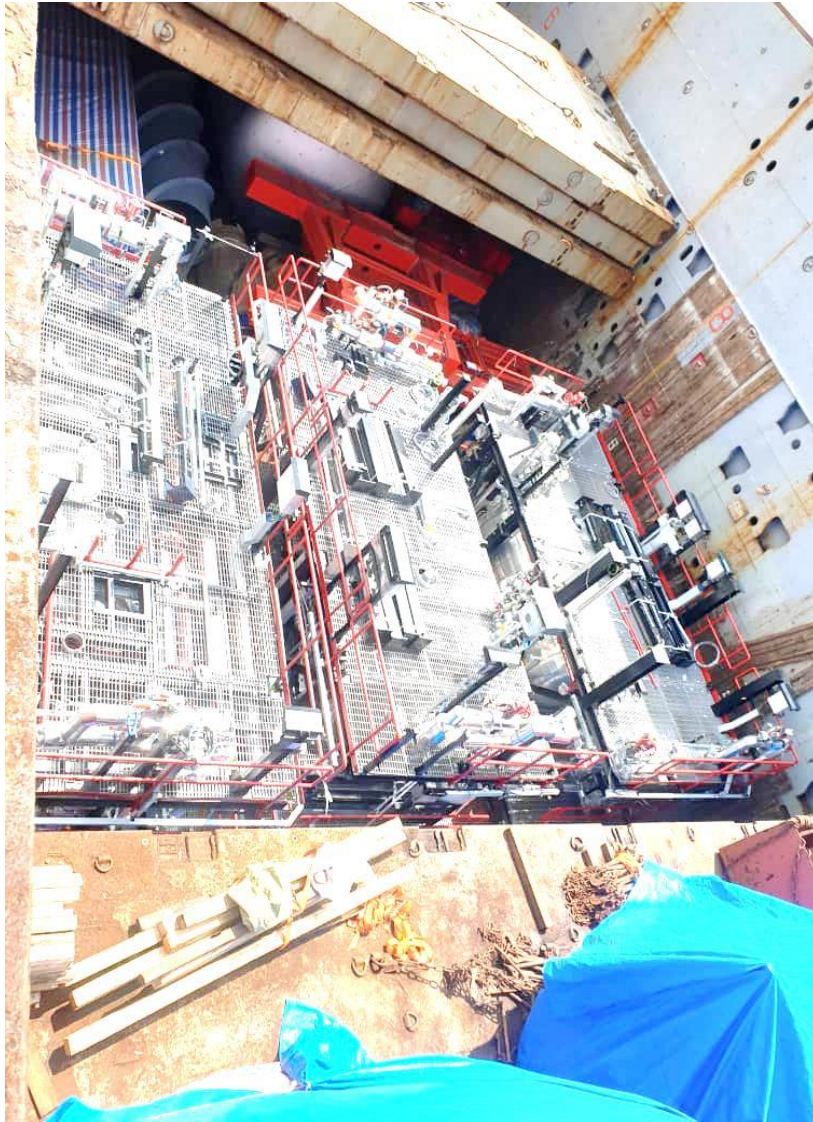
Length : 12.80meters

Width : 4.20meters

Height : 4.70meters



# Nag Separation System



# Nag Separation System



# Certificate ISO9001: 2015



DAS CERTIFICATION



## Quality Management System Certificate of Approval

This is to certify that the QMS of  
**FAIRMACS MULTILINE SINGAPORE PTE LTD**  
178 Paya Lebar Road  
#03-01  
Singapore 409030

Has been assessed and found to meet the requirements of  
**ISO 9001:2015**

This certificate is valid for the following scope of operations  
**Provision of Freight and Logistic Support**

Authorised by:

Stan Wright  
Director

Date of Certificate Issue: 20 July 2018  
Certificate Valid Until: 30 October 2020

Recertification audit before 30 September 2020. Certified since 31 October 2014. This certificate is the property of SN Registrars (Holdings) Limited and remains valid subject to satisfactory annual surveillance audits.

SN Registrars (Holdings) Limited  
Registration House, 22b Church Street,  
Rushden, Northamptonshire,  
NN10 9YT, UK  
Tel: +44 (0) 1933 381859  
Email: [enquiries@dascertification.co.uk](mailto:enquiries@dascertification.co.uk)  
Web: [www.dascertification.co.uk](http://www.dascertification.co.uk)  
Company number: 07659067

Cert No: DAS 67285431/13/Q Rev: 001/80517



Trading name of SN Registrars (Holdings) Ltd

**Fairmacs Multiline Singapore Pte Ltd**  
178 Paya Lebar Road, Unit No.03-01  
Singapore - 409030  
Tel: 65 - 63241355

Fairmacs Group  
14, Moore Street  
Chennai - 600 001, Tamil Nadu, India  
Tel: 91-44-25231383

FML Cargoways Pvt. Ltd.  
No 02, Pentreve Gardens ,Colombo 03,  
Sri Lanka,  
Tel - 0094 115 014557

Fairmacs Multilines Pvt. Ltd  
Eureka Saleha Palace, Suite # C-4 (4th Floor),  
2/F/1 & 3, Mymensing Road,  
Shahbagh, Dhaka-1000, Bangladesh  
T: +88 02 8650184

Fairmacs Shipping Services LLC  
P O Box 123877 , Dubai - UAE.  
Tel: 00971 4 3546108

Fairmacs Multiline SDN BHD  
No.27A, Jalan Melaka,  
Persiaran Raja Muda Musa,  
42000 Port Klang, Selangor D.E.  
Tel: 603-3165 9454

Draft Cargoways Pty Ltd  
Level 5 Nexus Norwest  
4 Columbia Court  
Baulkham Hills NSW 2153 Australia  
Tel: +61 1800 124 381,

Draft Cargoways India Pvt Ltd  
125-05 Liberty Avenue,  
South Richmond Hill, NY 11419-2233  
Tel: 001-866-323-0410



**FAIRMACS**

[WWW.FAIRMACS.ORG](http://WWW.FAIRMACS.ORG)